



Juried Exhibit by the Members of PASNWPA

“The World as We See It”



Artist Bios

Artist Statements

Artwork Details



PASNWPA is a 501(c)(7) non-profit organization that promotes and supports fine art photography in the northwestern Pennsylvania area. **PASNWPA** showcases the works of its accomplished and award-winning contemporary photographers, helps to define photographic fine art by educating the community with gallery shows and programs, and teaches those who aspire to advance their photography as fine art.

Meet the Artists in our Show!

We invite you to learn more about the artists whose work is displayed in this show, "***The World as We See It!***"

Each artist has provided an **Artist Bio** and **Artist Statement** so that you can learn about their education, history, and experience with photography as well as their thoughts about the artwork they chose to display in this show or their collective works.

Additionally, a small photo of each piece of artwork is included along with the details about that artwork: title, medium, print size and price. Each artist also describes why the selected image is special to them!

© 2022 by the Photographic Arts Society of Northwestern Pennsylvania

The photographers retain all rights to the images published in this document.

www.pasnwpa.org

Contents

Ellen Anon.....	4
Jack Anon.....	6
Alex Cohen.....	8
Candy Felege.....	10
Frederick Fiedler.....	12
Christine French.....	14
Ricardo Gilson.....	16
Darla Graff.....	18
Melinda Isachsen.....	20
Dorothy Kloss.....	22
Patti Larson.....	24
John Misterovich.....	26
Patty Raydo.....	28
Robert Raydo.....	30
Rebecca Samler.....	32
Monica Schwegman.....	34
Anna Marie Senita.....	36
James Steadman.....	38
Kathy A Welte.....	40
Gregory Zbach.....	42

Ellen Anon

Artist Bio

Ellen Anon is a freelance photographer, writer, and speaker who specializes in expressive photography. She earned a Ph.D. in clinical psychology and gradually evolved into a full-time professional photographer in the mid-1990s.

Ellen's images, based on nature, are sometimes realistic and sometimes abstract, but always designed to elicit emotional reactions from the viewer. Her goal is to go beyond the ordinary in ways that hopefully stimulate others to pause and appreciate the beauty and wonder of our earth in a way that balances some of the stresses of everyday life.

Ellen's images are included in collections in several countries, and she has had winning and commended images in international contests including NHM *Wildlife Photographer of the Year* and Windland Rice *Nature's Best* Competitions.

Ellen is one of the co-authors of the highly acclaimed book, "*See It; Photographic Composition Using Visual Intensity*" as well as the "*Photoshop for Nature Photographers; A Workshop in a Book*" series, all written with her son, Josh. She is very honored to be a member of the SanDisk Extreme Team.

Email: ellenanon@mac.com

Contact Info: FB: www.facebook.com/ellen.anon/

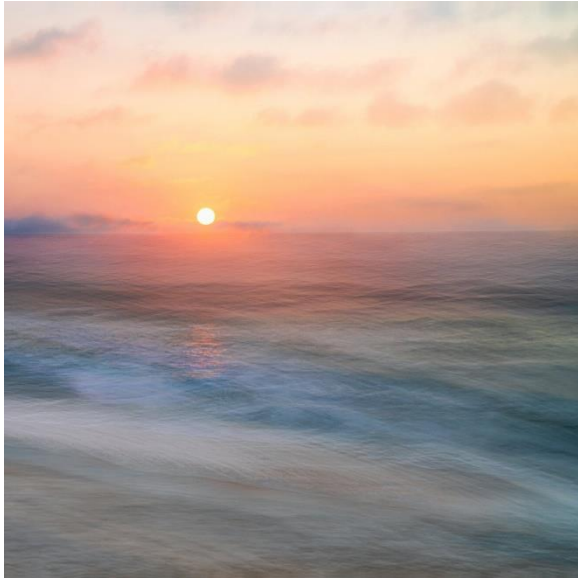
Instagram: www.instagram.com/ellenanonart/

Website: www.ellenanon.com

Artist Statement

I photographed this series of images while spending time near the ocean. Many evenings I'd go down to watch the sunset to unwind. I wanted to create images that went beyond just documenting the beauty of the ocean and that would hopefully capture some of that experience that's so soothing. I found that by combining longer exposure times and intentional camera movement with some elements from faster exposures, I could create images that are visually intoxicating and calming.

Ellen Anon's Artwork



"Calming Rhythms"

Giclee Photographic Print

14.5" X 14.5" Print

\$295.00

Why this image is special to me:

"When I look at this piece it brings back the sense of being at the shore with the repetitive flow of the waves, the breezes, the clouds moving by, and the sun gradually setting. I find it very calming."



"Rhythms of the Earth"

Giclee Photographic Print

12.5" x 19"

\$295.00

Why this image is special to me:

"For me this image captures many of the elements I love about sunset at the beach including the flying birds, waves rushing in and out, and of course the beautiful colors of the sky."

Jack Anon

Artist Bio

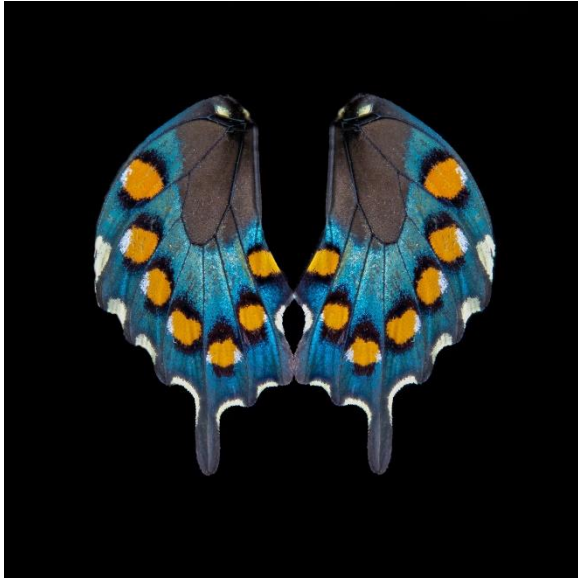
I have been an ENT physician in Erie, PA since 1986. I provide care for the “young and young at heart”. I am married to my bride for 42 years and have 2 sons. Photography runs through all of our veins. My first photograph was of a dolphin in mid-air at a water show in Florida 1964. I clearly remember pushing the shutter button on my Brownie camera and could not wait to see the print. Sixty years later I still have the same sense of wonderment and excitement about my photography.

Artist Statement

My photos have a mission to capture rarely viewed scenes and environments and present them in an interesting way. The less obvious lessons of nature interest me the most. It may be a lonesome tree on an isolated hill or the dark interior of an abandoned building. Whatever the subject or locale, I hope my images will stir up the some of the unexpected feelings and thoughts that I felt in my viewer.

I try to show beauty, but also try to evoke a sense of wonder and mystery.

Jack Anon's Artwork



"Angel Wings"

Giclee Print

16" x 16"

\$300.00

Why this image is special to me:

"The macro world has been a special place for me for many years. The ability to sit quietly for long periods of time with a small subject is relaxing yet invigorating. The wings of this butterfly are so beautiful. Their form and color are magical and invoke a religious feeling."



"Cape Buffalo and Painted Sky"

Giclee Print

16" x 20"

\$350.00

Why this image is special to me:

"The moment I captured this scene with my camera, I realized that this was one of the greatest photographic moments of my life. This cape buffalo came to the watering hole just as Mother Nature turned the sky into color magic. I held my breath and barely moved a muscle only to push my shutter button for what seemed like an eternity. This was truly my world."

Alex Cohen

Artist Bio



Alex Cohen spends most of his time traveling between Ohio and Pennsylvania capturing the explorations he and his family take between the two states and anywhere else that life guides him. Taking photos of everything he comes across, whether it be nature, people, or obscure oddities found all over the place.

After spending many years in the dark and dismal abyss of depression, alcoholism, and drug addiction Alex found sobriety and a new spiritual path. At this point his eyes reopened to the beauty of life and the world around him. With that newfound perception he has channeled that love of beauty into his love of photography.

His award-winning work can be found in various galleries, gift shops, businesses, and other locations in both Pennsylvania and Ohio.

He has also received a great deal of recognition in online photography competitions around the web. Living his life one moment at a time, he continues to follow his passion through learning, growing, and capturing everything he can.

IG: ACohenPhotos

Contact Info:

Web: SerenityAlex.com

Email: ACohenPhotos@att.net

Artist Statement

I have always had a fascination with the intricate details of plant life and flowers. As a photographer I have enjoyed the ability to capture those details, especially up close. Finding a way to not only replicate the beauty that I see and feel, but to enhance it and create art. To evoke a sense of peace and tranquility, through the beauty of art and nature. This is where I find serenity. This is where I hope others can also find serenity while viewing my art.

Alex Cohen's Artwork



"Dahlia Dream"

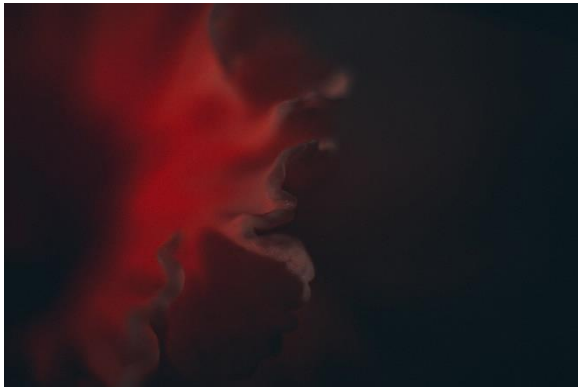
Framed Print

16" x 24"

\$280.00

Why this image is special to me:

"The beauty of a blooming flower reminds me of the beauty of life. Sometimes there are sharp edges, sometimes rounded curves, but none the less there is always growth."



"Dahlia Dream"

Framed Print

16" x 20"

\$280.00

Why this image is special to me:

"Macro shots of plant life always fascinate me. Getting really close to a flower to observe the various angles, waves, ebbs, and flows of the petal is something of true beauty. Glowing light to enhance those curves adds to the enchantment."

Candy Felege

Artist Bio

Candy started her journey in photography in 2010 after her son came home for a visit. He had already been taking photos as a hobby and through his influence she got bit too. Photography has led Candy to appreciate and enjoy nature by spending more time looking and listening to her surroundings. Her time outdoors is relaxing and helps her put life into perspective.

Candy's main interest is nature, whether wildlife or flowers. It's a great feeling for her to capture a wild animal in its natural habitat or a zoo animal doing something interesting. She believes there is always something new to learn about photographing a subject and then learning how to enhance it with post processing techniques.

Artist Statement

For this show, I chose one image from Wisconsin, where I often travel to visit my son, and one image from Erie, closer to home. I never tire of exploring the rural countryside of Wisconsin as well as the state's urban skylines. My favorite place to photograph in Erie is Presque Isle and around the Bayfront. I grab my camera whenever there are tall ships afloat with their sails billowing in the wind.

Candy Felege's Artwork



"Brig Niagara"

Photography

8" x 10"

\$125.00

Why this image is special to me:

"The Brig Niagara is home-ported in Erie, Pennsylvania. It is always a welcome and impressive sight to see the ship out on the water with its two large masts and billowing sails. "DON'T GIVE UP THE SHIP!"



"Hyde's Mill"

Photography

8" x 12"

\$125.00

Why this image is special to me:

"This wooden water mill, located in Ridgeway, Wisconsin, is my favorite photographic destination when traveling through the peaceful countryside of Wisconsin. I enjoy photographing this beautiful old mill while listening to the gently flowing water over the small dam."

Frederick Fiedler

Artist Bio



Fred has been passionate about photography and art from a very young age. He was hooked from the minute he first held a Nikon film camera that was owned by one of his Aunt's Boyfriends when I was only 10 years old!

He has always been fascinated with the ability to freeze time with a photograph and believe the invention of photography has had a profound impact on the world. **It is the ultimate universal communication tool and transcends all languages barriers.**

Fred graduated from Mercyhurst University in 1984 with a dual degree in Graphic Arts and Business Marketing. Although he loved photography and art, it was difficult to make a full time living doing it. Photography always remained as the perfect hobby and a great stress reliever from the pressure of the various sales and management positions he held in the Commercial Insurance Industry.

Fred's excitement for Photography really blossomed with the photographic digital revolution that happened almost 20 years ago providing him with so much more creative control over his work. The digital revolution also has blurred the line between photography and art allowing him to combine these two passions in much of his work. He uses photoshop and lightroom to enhance and transform his photography and also prints, mats, and frames the majority of the pieces he sells, giving him complete control over the quality of his art.

His work runs the gambit from featuring vivid, oversaturated colors for a more "dream like" artistic interpretation of a scene to stark dramatic black & white photographs. Fred sells his photography and digital art in several local galleries and is a member of the Photographic Arts Society of Northwest Pennsylvania (PASNWPA).

Imagination Photography

Contact Info: **Website:** imaginationphotography3415.zenfolio.com

E Mail: ffied5926@roadrunner.com

Cell Phone: 814-490-8764



Artist Statement

Photography has been a life-long passion and a way for me to enjoy and document the beauty of the natural world that is all around us. I love the creativity that the digital revolution has brought to photography. I print, mat, and frame the majority of my work allowing me to have complete control over the quality and look of my photographic art.

I find it difficult to specialize in just one type of photography but really do enjoy photographing old well worn, abandoned places, things, and buildings, etc. I also like to hike and always bring my camera with me to capture wildlife and beautiful landscapes that capture my attention. The challenge of getting the light, composition, and emotional response just right, keeps me trying to capture the perfect moment.

Many of my photographs have oversaturated colors that is the result of using in camera filters as well as photoshop to give the photograph a more dreamlike, vivid, painterly look. For these prints, I use a high end polar metallic paper that makes the colors really pop and gives it a special three-dimensional look.

Frederick Fiedler's Artwork



"Silver"

Photography

13" x 19"

\$225.00

Why this image is special to me:

"This was taken on a beautiful fall day in a small farming Amish town in Ohio called Mesopotamia. I talked to the Amish gentleman that owned the horse and found out that he was 25 years old, and his name was "Silver." He also told me that he had 58 grandchildren and recently celebrated his 50th wedding anniversary with all his family. It was a really great day and wonderful to see the simple and pure way the Amish live their lives."



"Walnut Creek Tunnel"

Photography

13" x 19"

\$225.00

Why this image is special to me:

"This scene was photographed close to my house in Fairview PA on Walnut Creek. It's been one of my favorite places to photograph over the years and document how the seasonal changes impact the look of the landscape. I took this photograph in late Fall and really liked the color version but loved the Black & White version due to the various detailed textures and water reflections in the scene."

Christine French

Artist Bio



Christine French is a multimedia artist. As a retired art teacher, from the Cleveland area, she moved to North East, Pennsylvania years ago. There she taught all art subjects from K-12 for 30 years. She has a BFA, MA, and MFA all from Kent State University. Some of the art forms she creates are glass windows, baskets, fiber art, paintings, illustrations, jewelry, sculpture, photography, mandalas, and encaustics. She has taught watercolors on cruise ships several times. She is an active member of the Photographic Arts Society of Northwestern Pennsylvania, Lake Erie Fiber Group, Erie Art Museum and the

Erie Photography Club.

Along with Ehren Knapp, she created the Zentangle Mural on the NEAC building from a grant from Erie Arts and Culture. She is a certified zentangle teacher. Besides zentangle she has taught beach glass jewelry classes and watercolor painting. She has been in many local exhibitions and won several awards. She painted 3 rain barrels for the Erie County Conservation District. Her artwork is for sale at Lakeview Wine Cellars, Grape Discovery Center, The House of the Potter, and Glass Growers Gallery

Contact Info: www.artthingsbychrisfrench.com

Artist Statement

Even though, I am member of the Photographic Arts Society of Northwestern Pennsylvania, I do not consider myself a photographer. I am an artist. I purchased my digital camera, to take pictures of my art for competitions and sales. Before I knew it, over time, I started taking photographs. In every direction that I look, I see beauty. I shoot my camera as an artist. I see through my camera's lens the elements of design everywhere: Color, Shape, Line, Space, Scale, Balance, Harmony, Emphasis, and Texture. A camera is another artist tool for me. For me everything is alive and has potential for art. I love nature. This environment where I live, around the shores of Lake Erie, never ceases to inspire me in my artistic endeavors; the trees, the plants, the mountains, the flowers, the water.

This excerpt from Hokusai closely expresses my feelings on why I create art. Hokusai, a famous Japanese artist, lived from 1760-1849.

Hokusai says look carefully.
He says pay attention, notice.
He says keep looking, stay curious.
He says there is no end to seeing...
He says everything is alive
Shells, buildings, people, fish, mountains, trees.
Wood is alive.
Water is alive.
Everything has its own life.
Everything lives inside us.
He says live with the world inside you.
He says it doesn't matter if you draw or write books.
It doesn't matter if you saw wood or catch fish...
It matters that you care. it matters that you feel.
It matters that you notice.
It matters that life lives through you. Roger Keyes

Christine French's Artwork



"Awe, The Colors of Spring"

Fine Art Photography

13.5" x 10.5"

\$210.00

Why this image is special to me:

Last year, I planted over 500 hundred bulbs of daffodils and tulips. After a long winter, they were like a breath of fresh air, when they came up. The colors were amazing. I simply, had to photograph them, in one of my vases. Now, these beautiful spring flowers, will last forever.



"Cosmos"

Fine Art Photography

13.5" x 10.5"

\$210.00

Why this image is special to me:

I am a gardener, and one of the things that I grow are annual flowers.

As the seasons change, I enjoy photographing my flowers in various vases that I have.

It is my way of making the flowers last forever.

Ricardo Gilson

Artist Bio

Ric is a self-taught photographer, who began taking photographs 35 years ago with a borrowed camera and hand full of ideas.

Ric lives in Meadville, PA., and his portfolio reveals that he's a traveler. Despite all the miles, his favorite and most popular work has been focused near his northwestern Pennsylvania home.

To view more of Ric's work, visit his website and social media sites.

Contact Info: **Website:** ricardofilsonphotography.com
Facebook: Ricardo F Gilson Photography
Instagram: #ricardofilsonphotography

Artist Statement

Since I have no specific photographic genre, everything is a potential photograph. I strive to keep my art simple and tend focus on the smaller elements of an otherwise larger picture. Physically adding an out of place element into a scene to grab attention and provoke thought, also fits my character, my own twist on surrealism. There is little in common with the pieces I have exhibited here, but then that's how I approach my art.

Ricardo Gilson's Artwork Details



"Orange Mound Spring"

Photography

12" x 18"

\$300.00

Why this image is special to me:

"Orange Mound Spring is part of Yellowstone National Park's, Mammoth Hot Springs complex, but requires little extra effort to see. Since few Yellowstone visitors make that effort, it brings me pleasure to show what frequently gets missed."



"The Invitation"

Photography

13" x 17"

\$225.00

Why this image is special to me:

"I've taken many winter photos of this maple tree but regardless of the conditions or composition, it always looked cold and lonely. The chair was added for warmth and companionship, but I later realized that the chair was also an invitation, for me, or maybe you, to join in."

Darla Graff

Artist Bio



Darla is a fine art, nature, and wildlife photographer based in Erie, Pennsylvania. Her passion for photography and the images she creates are expressions of her love for nature and wildlife. She has a special aptitude for discovering beauty by connecting nature and wildlife with light. Her photography has awakened others to share in her passion and develop an appreciation of all beauty in nature.

Darla began pursuing photography in 2016 and launched a professional photography career in 2018. She has published an annual wall calendar titled "Beauty in Nature" for the past 3 years, featuring her most popular nature and wildlife images. She also has a successful career as a Third Party Security Risk Manager at an insurance company.

Awards

- June 2021 - Lake Erie Living Magazine Contest Winner
- April 2021 – Fine Art Photography Awards – Nomination in Professional Nature
- February 2021 - 2020 Annual Photography Awards International Professional - Honorable Mention in Wildlife
- 2020 Chromatic Photography International Professional - Honorable Mention in Wildlife and Animals
- Recognition for my photography work through Magazine and Article publications and Instagram features - including the Winner of the Summer 2021 Raw USA contest

Memberships

- Photographic Arts Society of Northwestern Pennsylvania (PASNWPA) – joined October 2021
- Erie Photography Club – joined September 2021
- North American Nature Photography Association (NANPA) – joined August 2021
- RAW VIP Community Member

Website: www.darlagraffphotography.com
Contact Info: **E-mail:** darlagraffphotography@gmail.com
Facebook: [@darlagraffphotography](https://www.facebook.com/darlagraffphotography)
Instagram: [@darlagraffphotography](https://www.instagram.com/darlagraffphotography)

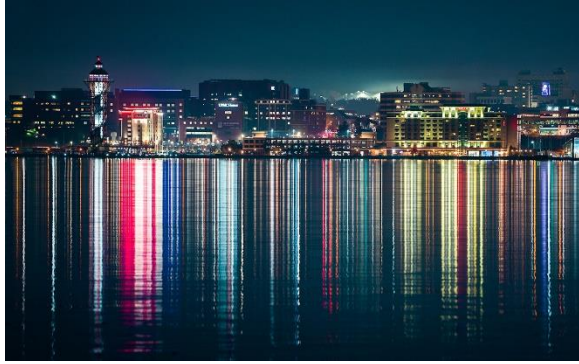
Artist Statement

I am a fine art, nature and wildlife photographer based in Erie, Pennsylvania. I was born and raised in a rural area where I spent a lot of time exploring nature. My passion for photography and the images I create are expressions of my love for nature and wildlife.

My enthusiasm for photography began with a love of the outdoors. Being surrounded by nature always feels calming and meaningful. It centers and helps me to understand what is really important in life. To see an animal's eyes as it looks at me with curiosity is a reflection of my own looking through the viewfinder. My images are created to evoke an emotional reaction from the viewer.

I began pursuing this passion in 2016 and launched my professional photography career in 2018. I have published an annual wall calendar titled "Beauty in Nature" for the past 3 years, featuring images from Presque Isle State Park and the Erie area. My aptitude for discovering and capturing beauty is achieved by connecting color with light. My work has awakened others to share in my passion and develop an appreciation of all beauty in nature.

Darla Graff's Artwork



"Erie Skyline Foggy Night"

Metal print

20" X 30"

\$275.00

Why this image is special to me:

Capturing the Erie City skyline and lights reflecting across a calm Lake Erie is always magical. On this foggy November evening, the fog diffused the lights, and it created the most beautiful colored sky that reflected across the lake.



"Red Fox at Sunset"

Framed Print

11" X 16"

\$240.00

Why this image is special to me:

I have a fondness for all wildlife, with foxes being one of my favorite animals. I was watching and photographing 3 red fox kits playing outside of their den, when their mom came running through the field at sunset and I was able to capture her coming home to the kits, which is why this print is special to me.

Melinda Isachsen

ARTIST BIO

Melinda Isachsen captures the ordinary in unexpected ways. Her subject matter can be as simple as dolls at a flea market or something more complex as big city life.

Melinda was born and raised in western Pennsylvania and later moved around the world living and working in eight different countries and traveling to many more. Photography became her means of recording everything around her. What she does so well is creating extensive photo series of a chosen subject and then working the images into various end products such as books, videos, and art exhibits.

She has exhibited her work in such cities as Geneva, Tunis, and Rome. After 30 years abroad, she returned to Pennsylvania and made Erie her home. She is a member of the Erie Photography Club and the Photographic Arts Society of Northwestern Pennsylvania.

ARTIST STATEMENT

When I travel the world, I am immediately drawn to the usual bright and cheerful touristy attractions, and then to the dark and grittier side of town. I step off the beaten track and explore dark corners and am often met with photographic surprises. I chose these two images for this show because neither one is your usual tourist snapshot from a faraway place. Both were taken after the sun went down. Both elicit a sense of mystery.

Melinda Isachsen's Artwork



"Ghostly and Serene"

Photography

18" x 24"

\$350.00

Why this image is special to me:

"Venice in Italy is first and foremost known for its canals and bridges. Just as characteristic as these two features of the city is the maze of narrow alleys leading into small squares surrounded by homes, restaurants, cafés, shops and churches. This image is special to me because it reflects the serene and ghostly movements through the alleys and squares once evening hits and the sun can no longer reach into such narrow spaces."



"Rest in Peace"

Photography

18" x 24"

\$350.00

Why this image is special to me:

"The cemeteries in Europe are very different from those in the United States. They are fascinating places allowing one a glimpse into ancient lives, beliefs and customs. This image is from the Verano Monumental Cemetery in Rome, Italy. The cemetery covers an area of over 200 acres. It has been a burial place for many centuries with countless historical and artistic testimonies. It is special to me because it reminds me of the evening I was locked inside the gates and for a moment thought I would be spending the night among the dead."

Dorothy Kloss

Artist Bio

Dorothy Kloss was born in March 1956 in Erie, Pennsylvania. As a child she was significantly influenced by her parents and grandparents, both scientists and musicians. At the age of five she took ballet, began piano lessons, and sang in the church choirs until she reached high school. She spent the first part of her life very involved in church music, junior and senior high chorus, and concert choir and in high school decided to pursue a Bachelor of Music degree from Westminster College. For 15 years after college, she worked in the pipe organ industry and photography was even then intertwined and inseparable from her life.

Although photography was not pursued until later in life, it was deeply embedded in her at a young age by her father, also a photographer and Research and Design Engineer who majored in physics. Because of him she was able to learn about the science behind photography and proceed on to large format photography and the darkroom. When her parents moved to assisted living, she inherited her father's darkroom equipment along with the chemicals and camera collection and began the second chapter of her life as a photographer.

After taking a class at the Erie Art Museum in darkroom techniques she then built her first darkroom. It was then that Dorothy's passion for photography really took hold. She began attending photography workshops in Toronto, Pittsburgh, Michigan, and Rockport Maine, where she was introduced to the world of historical and alternative photographic processes and met many internationally renowned photographers.

Dorothy is now retired and able to work full time at home in her studio/darkroom in Cambridge Springs, Pa where she can continue learning new techniques, both old and new.

Her work has been included in several juried exhibits including eight entries in the Erie Art Museum Spring Shows, Mercyhurst University Cummings Gallery exhibits, the Amanda Smith Gallery in Texas, as well as various galleries and exhibits in Northwest Pennsylvania since 2001.

Dorothy has been a member of the Northwestern Pennsylvania Artists Association (NPAA) as well as the Photographic Arts Society of Northwest PA (PASNWPA).

Contact Info: **Website:** dorothyklossphotography.com

Artist Statement:

I find that my best photography happens when I am able to respond to and interpret what has been given me during some period of receptivity. It almost becomes a meditative act. When I least expect it, some 'thing' appears before me as if it were waiting for me. These kinds of moments are very similar to the "Law of Attraction", unexplainable, possibly unbelievable yet so very real to me. My passion for photography allows that to happen, both technically and spiritually. We all interpret things differently and that is what makes life and the arts so unique.

Dorothy Kloss's Artwork



"Henry Run Falls"

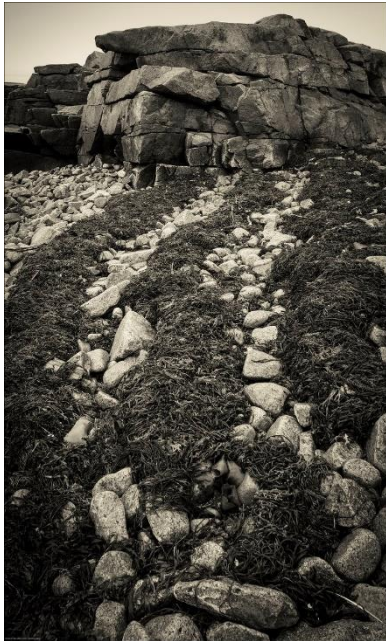
Archival Pigment Print

13.125" x 12"

\$400.00

Why this image is special to me:

"After having hiked two miles up and down the North Country National Scenic Trail for what seemed like an eternity and then seeing this just made the trek and the memory worth so much more. I immediately set up my tripod and knew this was what had been waiting for me and why I had come so far."



"Imagining Cornwall"

Archival Pigment Print

17" X 10.625"

\$400.00

Why this image is special to me:

"For several years I have been blessed by someone who has opened my eyes to landscapes I'd never imagined. Then suddenly our adventures had to take a back seat to an unfortunate set of circumstances. When we were able to travel again, it was as if everything had changed. Finding a solitary place of contemplation was almost impossible amongst all the tourists, children, and dog-walkers. Because it is so important to me and to my art to find solitude, I could remain there for days when the solitude finally does happen. This image reminded me of what it might be like to be near a village on the other side of the Atlantic, way up north."

Patti Larson

Artist Bio



Photography started as a creative outlet in 2012, but quickly became a passion for Patti. Embracing digital tools to combine the disciplines of photography, digital painting, and graphic design, her goal is to make an image more than just a photograph. More recently her artistic journey has led her to explore oil painting as a creative medium.

Patti is a member of the Erie Photography Club, Presque Isle Artists Association and is currently President of the Photographic Arts Society of Northwestern Pennsylvania (PASNWPA).

She has won numerous awards locally and regionally, including the Diane Peyton-Majundar Trophy for 1st Place in the Digital Wildlife Division at the 2019 Niagara Frontier Regional Camera Club Expo as well as through the Independent Council for Aging.




Patti's photographic artwork has been featured in three solo exhibits as well as in local and regional galleries and is displayed in installations in several corporate offices in the Erie area. She has given presentations to many photography clubs and has taught basic and advanced post-processing techniques.

Patti is **"Inspired by Art in Nature."**



Website: www.pattilarsonphotos.com

Contact Info: **Email:** pattilarsonphotos@outlook.com

Social Media:   

Artist Statement

Photography enables me to capture a scene or moment in time and transform it into my artistic vision. My goal is to take each image beyond just a photograph by embracing the digital tools that combine the disciplines of photography, painting, and graphic design.

Nature has always been an important part of my life and early on I literally turned my focus to the beauty in nature – with its rich colors, patterns, textures, light, and shadows. Images that project warmth and emotion are what I find most compelling. My primary photographic interests include wildlife, landscapes and seascapes, and anything involving nature. Beauty abounds throughout the world from far-reaching travel destinations to my own backyard ... if you take the time to look.

Patti Larson's Artwork



“Lili'uokalani Japanese Gardens”

Fine Art Photo on Metallic Paper

12” x 18”

\$400.00

Why this image is special to me:

“Lili'uokalani Japanese Gardens are the largest authentic ornamental Japanese gardens outside of Japan. This image was taken while visiting Hilo on the Big Island of Hawaii. The arched footbridge over a horseshoe-shaped pond with the banyan tree leaning into them created a picture-perfect combination to my eye. The image is printed on 18” X 12” metallic paper which helps to enhance its rich colors and adds a shimmering warmth and depth to the image.”



“Stained Glass Forest”

Fine Art Photo on Canvas

16” x 32”

\$375.00

Why this image is special to me:

“Autumn in the Pisgah Forest is a photographer's dream with its hills, valleys, waterfalls and hearty oak and red maple trees. My eyes were drawn to the sunlight filtering through the trees and my vision was to create a look that enhanced the deep red colors of the leaves and to give it a “stained glass” appearance. This 32” X 16” image is printed on stretched canvas in a black custom frame.”

John Misterovich

Artist Bio

Photographer John Misterovich is located in Erie, PA. His education in photography includes numerous photography related conferences, and in-person and on-line courses. John has been interested and active in photography for many years. Areas of interest include landscape, nature, and black and white photography.

He has exhibited his work in both local and regional exhibitions and offers his work for sale in Erie and the surrounding area.

He is an active member of the Photographic Art Society of Northwestern Pennsylvania and the Erie Photography Club.

Samples of John's work can be viewed at the Photographic Art Society Artists page.

Contact Info: **PASNWPA Website:** www.pasnwpa.org/artists#/john-misterovich
Email: jamiste@roadrunner.com

Artist Statement

Photography for me has been a long-time passion. I shoot primarily landscapes, nature, and black & white. I am located in Erie, Pennsylvania and much of my photography activity takes place in Erie and the surrounding areas. Both images in this Crary Art Gallery exhibition are local -- one from Erie and the other from the Findley Lake area.

My photographic goals are to capture interesting and creative photos, and to have the viewer enjoy the final image, be it on screen or as a printed, framed photograph.

Both of the images that are included in the Crary Art Gallery exhibition reflect these goals. "Early Snowfall", is a winter landscape, with its contrast, subdued color, and reflections. And "Chaos in the Color Orange", is an image of colorful and frenzied activity...a departure from my usual style.

Photography for me provides the opportunity to focus on and appreciate the beauty of this world, and to hopefully capture and convey that beauty with the camera.

John Misterovich's Artwork



"Chaos in the Color Orange"

Fine Art Photograph

11" x 14"

\$200.00

Why this image is special to me:

This photograph was taken during an event in Erie, PA called the Color Run in which participants ran a course through the downtown area and area, periodically showered with colored cornstarch. This particular photo was taken at the moment when the participants had congregated, and simultaneously threw their orange powder into the air, providing a scene filled with color, action and a sense of utter chaos -- a golden opportunity for a photographer!



"Early Snowfall"

Fine Art Photograph

11" x 14"

\$200.00

Why this image is special to me:

This photo was taken during an early winter snowfall in the Findley Lake, NY area. Of the photos taken that day, this one was special in that the scene provided interest, contrasts, color in the willow leaves, a reflection in the not yet frozen pond, and an opportunity for a solid composition.

Patty Raydo

Artist Bio



Co-owner of Country Settings Photography specializing in Fine Art Photography. Patty has been President of the Erie Photography Club for over 20 years and also a participating member of the Photographic Arts Society of Northwestern PA, Presque Isle Artist Association and the Niagara Frontier Region Camera Clubs

Over the years, Patty has instructed photography for the Erie Photography Club, the Meadville Camera Club, the Erie Art Museum, the Twin Tier Camera Club, the Art of Photography and mentored numerous individuals.

Patty has won numerous awards for her photography but the one she is most proud of is winning the 2012 - Panorama Dr. Dennis Travis Memorial Award for Best Photograph.

Patricia Raydo
7341 West Lake Rd

Contact Info: Fairview Pa 16415

E Mail: epcraydo@yahoo.com

Cell Phone: 814-823-9005

Artist Statement

I struggle to find a subject to photograph which has not been photographed a hundred times by others or by myself, especially close to home. I much prefer to photograph on trips to interesting places, but I chose a few images that I played around with and I like how they turned out.

Patty Raydo's Artwork



"Bleeding Heart"

Photography

11" x 14"

\$215.00

Why this image is special to me:

This image reminds me of a Japanese painting.



"Irish Cottage"

Photography

10" x 16"

\$245.00

Why this image is special to me:

A vacation turned into a wonderful opportunity to photograph this scene.

Robert Raydo

Artist Bio



Co-owner of Country Setting Photography with his wife Patty. Bob started his career as a portrait photographer, becoming Certified by the Professional Photographers of America. After retiring from studio work, he has put his efforts into the artistic side of photography.

Bob is a member of the Erie Photography Club, the Photographic Arts Society of Northwestern Pa, the Presque Isle Artist Association and the Niagara Frontier Regional Camera Clubs.

At the present time, he enjoys how photography has grown into a whole new art form, so he strives to use all the newest tools to bring his photography to a new level of art. He enjoys traveling and finding new places to photograph.

Robert Raydo
7341 West Lake Rd

Contact Info: Fairview Pa 16415

E Mail: raydocpp@aol.com

Cell Phone: 814-823-9005

Artist Statement

When I see an image in my mind's eye, I will capture the image in that moment and then into an artist's rendition in post processing. Most of the time the title is known to me at the time of capture, and I create a personal rendition of the subject using the title I thought of when the original image. I like to move from reality to concept using Topaz and Affinity.

Robert Raydo's Artwork



"Fade Away"

Photography
13" X 20"
\$265.00

Why this image is special to me:

Upon arriving at the site, seeing the abandoned ambulance, I wondered why it was there. The lighting at that time of day caught my attention. I ended up running the image through some filters to give it an old country effect.



"Season's End"

Photography
16" x 24"
\$285.00

Why this image is special to me:

Feeling the coolness of the day made me miss the summer warmth and dreading the return of winter. The image has a warm glow.

Rebecca Samler

Artist Bio



Rebecca Samler is a Fine Art Photographer. She has always used visual images as a means of communicating. Her tools have ranged from pencils to paintbrushes to cameras. Along with what some would say is a “good eye.”

Rebecca has displayed her unique work in many local and regional galleries. She has been commissioned by private collectors, local corporate offices, Erie Arts and Culture, as well as Erie Regional Chamber and Growth Partnership. Her work has appeared in various newspapers, magazines and travel brochures, including an in-depth feature in Lake Erie Lifestyle magazine.

Rebecca is a proud member of the Photographic Arts Society of Northwest Pennsylvania.

Contact Info: **Email:** beckysamler1@gmail.com
Website: rebecca-samler.pixels.com
PASNWPA Artist Page: www.pasnwpa.org

Artist Statement

An artist’s job is to evoke emotion. Art has always been my way of communicating, expressing my thoughts through pictures. My reward lies in that special moment when a person reacts to a unique piece I’ve created. They may just smile or have a wistful look in their eyes as a memory appears. The best moments are when they tell me THEIR story right after viewing a snippet of mine. Joy ensues!

Rebecca Samler's Artwork

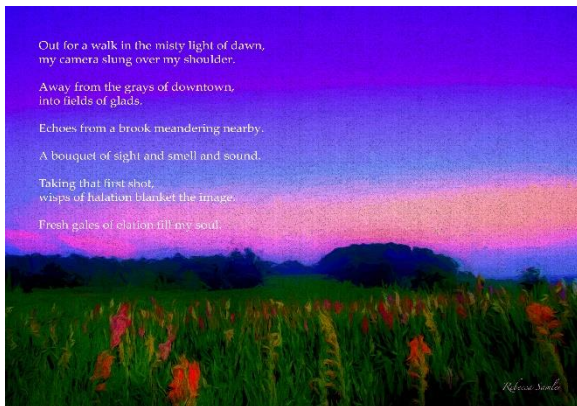


"Cosmos"

Photographic Print on Canvas
20" x 16"
\$125.00

Why this image is special to me:

"In a field full of gently swaying cosmos, busy bees scurried from one flower to the next. I found myself unfocused by all the activity. Then my camera was drawn to a solitary bee, hard at work on one cosmos. The energy of that lone bee had so much more impact than the chaotic dance of the crowded field. Snap!"



"Halation"

Enhanced Photographic Print on Canvas
18" x 24"
\$150.00

Why this image is special to me:

"This image attempts to describe a photographer's exhilaration as they search for the perfect shot. And the gratitude that accompanies success."

Monica Schwegman

Artist Bio

Monica, a native of Fairfield, Ohio, began her career with the study of Design at the University of Cincinnati. Her work is still there, residing in several private collections. Monica completed her university training at the Kansas City Art Institute in Studio Painting.

Extensive travel around the world and living in several regions of the United States has influenced her creativity. This challenged and augmented her perspective in form, color, and content. She works in a variety of media: oil, watercolor, acrylic, photography and often blending mediums to create her unique perspective. Her most recent transformation of art came with a three-week study combining photography, computer art, and painting at Anderson Ranch's New Media Studio in Colorado.

A veteran of both group and solo shows, Monica's work is visible in both private and public collections from California to New York.

Monica currently lives and works from her studio in Waterford, Pennsylvania.

Email: monica@monicaschwegman.com

Contact Info: **Website:** www.monicaschwegman.com
(814)602-6345

Artist Statement

Photography is a way for me to express myself. It is a way for me to see the world at a slower pace, to capture and portray it in a manner that is uniquely my vision.

I am in an intuitive place when I am behind the camera. I continually have the urge to simplify my compositions. Sometimes this leads me to complete-abstractions and mixing it with other mediums.

Photography opens my eyes to a clearer vision of the world around me, allowing me to explore and create in ways that I wouldn't otherwise.

Monica Schwegman's Artwork



"Flight Path"

Photography
11.5" x 17"
\$250.00

Why this image is special to me:

"Capturing a moment in time is exciting, especially when it is as fleeting as the flight of birds. The experience of hearing the initial rush of wings taking flight and then the echoing through the corridor in Old Town Dubrovnik, Croatia, is still with me. It took my breath away. "Flight Path" captures the birds flying along the path of the road with the perspective of the buildings accentuating their path, their speed of flight, and their movement upward to the open sky.

Notice, also, the stone carvings on the facade of the Renaissance period Franciscan church."



"Sky Dome"

Photography
11" x 15.5"
\$225.00

Why this image is special to me:

"At the hour of my visit to the Diocletian's Palace Vestibule (4th century AD), in Old Town Split, Croatia, the sun was in a position as to create a crescent moon image on the inside of the dome. The lighting, the shadows, and the position of the clouds created these moon-looking crescent shapes that lined up in such a manner that enhanced the circular, spiraling movement of the Vestibule.

While not depicted in this image, the exterior of the Vestibule is square, in contrast to the circular center. Statues, at one time, were in the arched openings."

Anna Marie Senita

Artist Bio

Her love of photography began as a teenager when she received a Polaroid camera. During her studies of physics, she built and used a simplistic pinhole camera. In the darkroom, she developed her black and white images recorded with that pinhole camera.

Upon purchasing a Nikon DSLR film camera, she continued advancing her photography through the years. By attending art shows and analyzing the work of other artists including the art media of pastel, charcoal, watercolor, oil, and photography, she discovered that she could advance her personal art style. Presently, she enjoys using digital Nikon cameras and the digital darkroom.

She has attended photography classes at the Pennsylvania State University, seminars, workshops, online courses as well as independent study through media and books.

Her images encompass a wide array of subjects which include wildlife, landscapes, pets, sporting events and portraits. They have been published in books, displayed in galleries, and other business venues. They have received many awards in various competitions. Some of which include honor awards through the Erie Photography Club, Niagara Falls Regional Camera Club, and second place in the People's Choice Award during the Niagara Falls Regional Camera Club Convention.

She is a member of the Erie Photography Club (2004-present), the Presque Isle Artists Association (2009-present) and the Photographic Arts Society of Northwestern PA (2014-present) (PASNWPA).

She currently resides in Erie, PA where she enjoys spending time with family, her dogs and the great outdoors.

"I have the expertise to be able to anticipate and successfully capture the action through the lens. From my Vantage Point, I illuminate the spirit of the moment!"

amdsen@roadrunner.com

Contact Info: www.vantagepointmoments.com

814-825-4249

Artist Statement

I have the expertise to be able to anticipate and successfully capture the action through the lens. From my Vantage Point, I illuminate the spirit of the moment!



Anna Marie Senita's Artwork



"Alpine Tundra"

Photography

16" x 24"

\$295.00

Why this image is special to me:

I planned my trip to Alaska in hopes of seeing the Alpine Tundra in all its spectacular autumn colors. This particular viewpoint did not disappoint and encompasses the grand landscape of Alaska.



"Stallion of Corolla"

Photography

16" x 22"

\$285.00

Why this image is special to me:

Just after sunrise, I found this lone wild stallion and decided to watch him. He meandered along until he smelled the herd beyond the dunes. He decided to go to the top of the dunes for a better view. Well, he quickly changed his mind and galloped back towards me as the wild herd stallion, guarding his mares, crested the dunes. It was a wonderful experience.

James Steadman

Artist Bio

James R. Steadman is a retired attorney now living in Erie and an avid and largely self-taught photographer. Jim took up photography with the advent of digital cameras and the use of photo processing and editing software. After 45 years in his law office, he is now able to devote more time to his passion for photography. He rarely exhibits his work but frequently shares it on social media. In 2020, on the night before the COVID shutdown, he bought his first drone and has enjoyed this new way of positioning a camera to get a broader scope and different angle on photography, making the ordinary geography of life into images which can make folks take a fresh look at their own environment. He is a member of the Erie Camera Club and was one of the founders of the Photographic Arts Society of Northwest Pennsylvania.

Email: jim@steadmanlaw.com

Contact Info: **Facebook:** Jim Steadman

814-323-3550

Artist Statement

The image Homeward Bound was taken as a panoramic shot by a drone camera over Lake Erie at Barcelona Harbor near Westfield, New York on a fine summer morning. The panorama, made of multiple photos stitched together covers a 180-degree view reduces the size of the land mass and increases the scope of the water and the wake of the homeward bound boat.

James Steadman's Artwork



"Homeward Bound"

Photo printed on canvas

18" x 24"

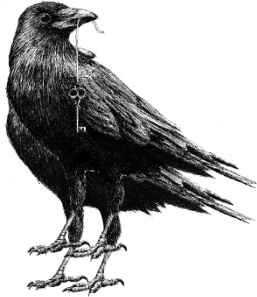
\$175.00

Why this image is special to me:

To me, this image depicts the wide, peaceful beauty of the Great Lakes in the summer and the assurance that even the shimmering trail of being homeward bound will ultimately fold into the waters and again be a part of the whole.

Kathy A Welte

Artist Bio



Kathy A Welte received her first camera at the age of 12 developing an interest in recording the events in the life of her family. As a young adult her 3 children became the main focus of her photography. When her children were grown and she became an empty nester she joined the Erie Photography Club where speakers, seminars, conventions and competition fueled an interest in Fine Art Photography.

Kathy has been a member of the Erie Photography Club since 2003 where she served the club as vice-president for 7 years. She is also a proud member of the Photographic Arts Society of Northwest Pennsylvania serving as vice-president for 1 year and was president for 6 years. Kathy is also a member of Presque Isle Artist Association.

She has mastered many editing techniques in Adobe Photoshop Elements, Lightroom, NIK and other software and is available for private lessons. She was also a speaker for 3 years at the Art of Photography.

Her work has been shown at local galleries; Main Street Art and Sticks & Stones Artisan Shop in Girard, PA and Gallery 104 in Edinboro, PA. Her work is shown at many juried and non-juried art shows, including the Barber Center, Independent Council on Aging at Mercy Center, Meadville Center for the Arts as well as many others. Being accepted into the 2014 Erie Art Museum Spring Show is one of her greatest accomplishments as an artist.

Contact Info: **Facebook:** Kathy A Welte Photography

Artist Statement

When I have my camera in my hand I tend to get lost in the moment, examining the very small details of what is in front of me and seeking a subject that evokes my vision. This happens so easily when outside enjoying what God has put before me. Watching for interesting light, contrasting colors and incorporating the lines and texture leads to an image that tells the story and creates a memory of my past. The final touches are added with the tools in my toolbox which include the computer and various editing programs used to further "paint" the image and enhance the details.

Kathy A Welte's Artwork



"Lines & Curves"

Fine Art Photography

10.5" x 13.5"

\$229.00

Why this image is special to me:

The perfect configuration of lines and curves along with the springtime shade of green caught my eye.



"Winter in Autumn"

Fine Art Photography

10.5" x 15.5"

\$229.00

Why this image is special to me:

It is always interesting to see the change of seasons. The snow on the branch with the fall leaves shows two seasons coming together and makes for an interesting composition.

Gregory Zbach

Artist Bio

Erie native Greg Zbach is a photo and new media artist, composer, retired electrical engineer and current President of the Northwestern Pennsylvania Artists Association. Greg's three published instrumental music CD's include "Grimsby," a full length children's ballet performed at the Warner Theater in 2002. Past exhibits include two collaborations with professional photographer Art Becker at Glass Growers Gallery and multiple invitation only shows with Campbell Stonewall Gallery, NPAA and PASNWPA art organizations. Works were accepted in juried art exhibits for the Erie Arts Festival Panorama, where Greg received an Honorable Mention, Excellence Award, Gold Circle Award and Third Place. His work was accepted 16 years in a row for "In the Garden," an annual show at Campbell Stonewall Gallery, where Greg received three Honorable Mentions.

More recently, Greg's works were accepted in five Erie Art Museum Spring Shows and NPAA juried shows at the Erie Art Museum and Crary Gallery in Warren, Pa. in 2019 and 2020. Greg also received First Place in an invitation only show at Campbell Stonewall Gallery "The Essence of Art: Pattern and Color" in 2019. Newer shows include a solo exhibit "Surrealectric - Intricate digital dreamscapes for the 21st century" at Glass Growers Gallery in 2022 and an invitation only show "Photography of the NPAA" at Mercyhurst University Cummings Gallery, in 2018. In 2019 Greg juried the Patricia S. Yahn Student Art Show at Penn State Behrend.

His work can be seen in multiple regional businesses, Glass Growers Gallery, D' Hopkins Denniston Gallery, Marquette bank, Erie Federal Credit Union bank, and Flagship City Food Hall. Greg is a charter member, current membership chair and a board director of The Photographic Arts Society of Northwestern Pennsylvania (PASNWPA). Greg is also an active member and serves on the board as president of the Northwestern Pennsylvania Artists Association or NPAA.

Website: www.gregzbach.com
Contact Info:
Email: gregzb@verizon.net

Artist Statement

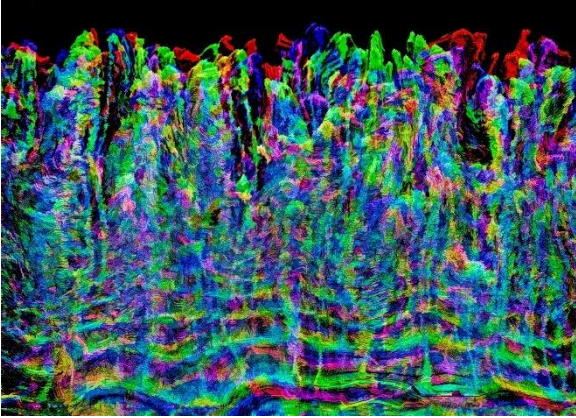
Being an artist with a background in engineering, I feel I have benefitted from the juxtaposition of analytical and creative processes in my perspective on art. This balance allows for a greater variety of artistic expression, leading to a range from surreal and even op art-like to painterly works.

I use technology to heighten the magical qualities of vision. The digital camera is one of the instruments I use to capture both the ordinary and extraordinary events I perceive. The digital darkroom allows me to present my impression of these moments in time. My work comes from a traditional photographic construct, but I also alter certain works to magnify and focus a feeling, mood or sense of wonder. This same approach applies to my newer all digital works but the instrument I use is not a camera but a computer and specialized software.

I strive to create a mysterious atmosphere in my creations, even to the point of strangeness, in order to draw the viewer in to a challenging and evocative experience.

It is my hope to leave the spectator a compelling and fresh view of the natural and virtual worlds

Gregory Zbach's Artwork

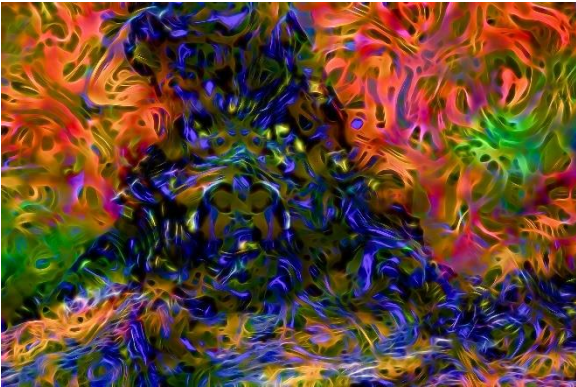


"Orchestral Colors"

New media art merging photography with digital painting and effects printed on metallic paper
11" x 14"
\$165.00

Why this image is special to me:

I have always sensed and craved the natural energy of the woods. It heals and rejuvenates the soul and helped me through some difficult times. In Japan it is called forest bathing. What a beautiful sentiment. To quote Yoda: "May the Forest be with You".



"The Woodwide Web"

New media art merging photography with digital painting and effects printed on metallic paper
11" x 14"
\$165.00

Why this image is special to me:

This work started as a photo of a fountain in monochrome. Beautiful and intricate in its simplicity and motion. But black and white left me wanting. By digitally painting the water in colors and textures, as naturally found all around us, I now see the beautiful movement of an orchestral work of music.